

Understanding the Challenges Faced by Homeless Individuals



*By Marc Rowley
(HIT Leadership)*



Foreword

In addressing the profound issue of homelessness, it is essential to approach the subject with both a deep sense of empathy and a commitment to factual understanding. The following document, "Understanding the Challenges Faced by Homeless Individuals," serves as a crucial resource in shedding light on the complexities and realities of homelessness.

As someone who is dedicated to helping homeless individuals, I have witnessed firsthand the multifaceted challenges faced by those living without a permanent residence. This document delves into the heart of these challenges, exploring the reasons behind the reluctance to embrace homelessness, the prevalence of substance abuse as a coping mechanism, the formidable barriers to employment, and the vicious cycle that perpetuates this situation.

The insights presented here are grounded in extensive research and evidence, reflecting the latest findings and perspectives from leading organisations and experts in the field. By presenting these findings in a manner that is both informative and empathetic, this document aims to foster a deeper understanding of homelessness, challenging stereotypes, and misconceptions.

It is my hope that this overview serves not only as an informative piece but also as a call to action. The plight of homeless individuals is not an insurmountable problem; it requires informed, compassionate, and dedicated efforts to provide not just immediate relief but sustainable solutions. As you read through these pages, I invite you to reflect on the role that each of us can play in making a meaningful difference in the lives of those who face the harsh realities of homelessness every day.

Together, we can work towards a future where homelessness is not a defining characteristic of anyone's life but a challenge that, with support and understanding, can be overcome.

Marc Rowley

#1.7 Leadership



Contents

Understanding the Challenges Faced by Homeless Individuals	1
1. Introduction	5
Understanding Homelessness	5
Factors Leading to Homelessness	5
The Societal Impact of Homelessness	5
The Psychological Toll of Homelessness	5
The Cycle of Homelessness	6
The Role of Substance Abuse	6
Barriers to Employment	6
The Role of Government and Society	6
The Importance of Tailored Support	6
The Economic Argument Against Homelessness	6
The Role of Education and Awareness	6
2. The Reluctance to Embrace Homelessness	7
A. Economic and Social Factors Leading to Homelessness	7
B. Personal Factors Contributing to Homelessness	7
C. Societal Attitudes and Stigma	8
D. The Impact of Homelessness on Individuals	8
E. The Challenges in Escaping Homelessness	8
F. Policy and Community Responses	9
G. Moving Forward: Recommendations for Action	9
3. Substance Abuse - A Misunderstood Coping Mechanism	9
Underlying Causes of Substance Abuse in Homelessness	10
Types of Substances Abused and Their Impact	10
Barriers to Treatment and Support	10
The Role of Mental Health in Substance Abuse	10
Impact of Substance Abuse on Homelessness	10
Effective Approaches to Addressing Substance Abuse in Homelessness	10
4. Employment Barriers - More Than Just a Lack of Address	12
The Stigma of Homelessness and Employer Bias	12
Lack of Access to Essential Documentation	12
Gaps in Employment History and Skills	12
Physical and Mental Health Challenges	12
Limited Access to Resources for Job Searching	13
The Challenge of Presentability	13
Transportation Barriers	13

Addressing Mental Health and Substance Abuse Issues	13
The Impact of Criminal Records	13
Lack of Support Networks	13
Childcare Challenges for Homeless Parents.....	13
Solutions and Support Systems	14
5. The Vicious Cycle of Homelessness.....	15
Understanding the Cycle	15
1. Initial Factors Leading to Homelessness	15
2. The Immediate Impact of Losing a Home	15
3. Health Deterioration	15
4. Substance Abuse as a Coping Mechanism	15
5. Barriers to Social Services and Healthcare	15
6. Employment and Financial Challenges	15
7. Social Isolation and Stigma	16
8. The Difficulty in Securing Housing	16
9. The Role of Government and Policy	16
10. The Impact of Childhood Experiences	16
11. The Challenge of Reintegration	16
12. The Risk of Recidivism	16
Breaking the Cycle - The Role of Supportive Services	16



1. Introduction

Homelessness remains one of the most pressing social issues in the UK, affecting thousands of individuals and families. As someone who is passionate and dedicated to aiding homeless individuals, it is crucial to delve deeply into the complexities of homelessness. This expanded introduction aims to provide a comprehensive understanding of the various dimensions of homelessness, the factors contributing to it, and the challenges faced by those living without a home.

Understanding Homelessness

Homelessness is not just the absence of physical shelter; it is a condition of disengagement from ordinary social relations, often accompanied by severe poverty and living conditions that are harmful to mental and physical health. The Office of National Statistics in the UK reported that an estimated 4,677 people were sleeping rough on any given night in 2019, a 165% increase since 2010 (Office of National Statistics, 2019). These figures, however, only scratch the surface, as they do not account for the 'hidden homeless' – those who are not sleeping rough but are staying in temporary accommodations, hostels, or couch-surfing.

Factors Leading to Homelessness

The path into homelessness is often a complex interplay of social, economic, and personal factors. Financial hardship, precipitated by unemployment, low wages, or unexpected expenses, is a common cause. The lack of affordable housing in the UK exacerbates this problem. According to Shelter, a charity that campaigns to end homelessness and bad housing, over 280,000 people were recorded as homeless in England as of December 2019, an indication of the housing crisis (Shelter, 2019).

Mental health issues and substance abuse are also significant factors. The Mental Health Foundation reports that people experiencing homelessness are more likely to suffer from mental health problems, with around 80% reporting that they have experienced mental health issues (Mental Health Foundation, 2020). Substance abuse, while often a consequence of homelessness, can also be a contributing factor, creating a complex relationship between addiction and living without a home.

Family breakdowns and domestic abuse are other critical factors. Homeless charity Crisis points out that relationship breakdown is a leading cause of homelessness, with many people finding themselves without a home after leaving an abusive relationship or family conflict (Crisis, 2020).

The Societal Impact of Homelessness

The impact of homelessness extends beyond the individuals it directly affects. It has significant implications for society as a whole. Homelessness puts pressure on public services, including healthcare, social services, and the criminal justice system. The costs are not just financial; they also encompass the social costs of increased crime rates, reduced employment opportunities, and the loss of productive members of society.

The Psychological Toll of Homelessness

Living without a home is not just a physical challenge but a profound psychological one. The constant uncertainty, vulnerability, and often the isolation associated with homelessness can lead to or exacerbate mental health issues such as depression, anxiety, and post-traumatic

stress disorder (PTSD). The stigma attached to homelessness can further alienate and isolate individuals from society, making it harder for them to access services and support.

The Cycle of Homelessness

Once an individual becomes homeless, escaping this situation becomes increasingly difficult. The lack of a fixed address can make it challenging to receive government benefits, access healthcare, secure employment, or even open a bank account. Children who grow up in homeless families are more likely to experience homelessness as adults, creating a generational cycle of poverty and homelessness.

The Role of Substance Abuse

Substance abuse among the homeless population is often a result of the harsh realities of living on the streets rather than the cause of their homelessness. Drugs and alcohol can become a means to cope with the trauma and stress of being homeless. However, this coping mechanism can create a barrier to accessing housing and support services, as many programs require sobriety as a condition for assistance.

Barriers to Employment

Employment is a critical factor in overcoming homelessness. However, the barriers to employment for homeless individuals are significant. The lack of a permanent address, limited access to hygiene facilities, and gaps in employment history can deter potential employers. Moreover, the psychological impact of homelessness can affect an individual's ability to seek and maintain employment.

The Role of Government and Society

Addressing homelessness requires a coordinated effort between government, charities, and society at large. Government policies play a crucial role in providing affordable housing, supporting mental health services, and ensuring that social safety nets are accessible to those in need. However, societal attitudes towards homelessness also need to shift. Reducing the stigma associated with homelessness and understanding the complex factors that contribute to it are essential steps in finding sustainable solutions.

The Importance of Tailored Support

One size does not fit all when it comes to addressing homelessness. Support services need to be tailored to meet the diverse needs of the homeless population. This includes providing mental health support, addiction services, job training, and assistance with finding and maintaining housing. Charities and non-profit organisations are often at the forefront of providing these personalised services.

The Economic Argument Against Homelessness

Investing in preventing and ending homelessness is not just a moral imperative but an economic one. The cost of homelessness to the public purse, in terms of healthcare, social services, and criminal justice, is significant. A study by Crisis found that it is far more cost-effective to prevent homelessness than to manage it once it has occurred (Crisis, 2018).

The Role of Education and Awareness

Public education and awareness are vital in changing perceptions and understanding of homelessness. Dispelling myths and educating people about the realities of homelessness can foster empathy and support for policies and initiatives aimed at tackling this issue.

Homelessness is a complex and multifaceted issue that requires a comprehensive and empathetic approach. Understanding the various factors that lead to homelessness, the challenges faced by those who are homeless, and the societal impacts of homelessness is crucial in developing effective strategies to combat this issue. As someone dedicated to helping homeless individuals, it is our responsibility to advocate for and provide support to those in need, while working towards long-term solutions to prevent and end homelessness.

2. The Reluctance to Embrace Homelessness

Homelessness is a complex and multifaceted issue that affects a wide range of individuals across the UK. It is a condition often characterised by uncertainty, vulnerability, and social exclusion. Contrary to common misconceptions, the majority of those experiencing homelessness do not choose this as a way of life. Instead, they find themselves in this situation due to a myriad of factors, often beyond their control. This expanded section delves deeper into the reasons why individuals become homeless, the societal and personal impacts of homelessness, and the challenges in escaping this situation.

A. Economic and Social Factors Leading to Homelessness

1. *Financial Hardship and Poverty:* A primary cause of homelessness is financial hardship. Rising living costs, low wages, and inadequate social security benefits can lead to individuals struggling to afford housing. The Joseph Rowntree Foundation (2019) reported that poverty is a key driver of homelessness, with many individuals being just one pay check away from losing their home.
2. *Lack of Affordable Housing:* The UK faces a significant shortage of affordable housing. The National Housing Federation (2021) highlights that the supply of affordable homes has not kept pace with demand, pushing more people into precarious living situations or outright homelessness.
3. *Unemployment and Job Insecurity:* Unemployment or job insecurity can quickly lead to homelessness. The loss of a steady income makes it difficult to meet financial obligations like rent or mortgage payments, leading to evictions.
4. *Government Policies and Benefit Changes:* Changes in government policies, particularly around welfare and housing benefits, have been linked to increased rates of homelessness. The Homelessness Reduction Act 2017 aimed to address this, but its impact is still being evaluated.

B. Personal Factors Contributing to Homelessness

1. *Mental Health Issues:* Mental health problems can both be a cause and a consequence of homelessness. The lack of a stable environment can exacerbate existing mental health issues. Mind (2020) reports that many people with mental health problems are at risk of homelessness due to the difficulty in sustaining employment or managing finances.
2. *Substance Abuse:* While often viewed as a reason for homelessness, substance abuse is frequently a result of the stress and trauma associated with being homeless. However, it can also be a precipitating factor, as addiction can lead to job loss and financial ruin.

3. *Family Breakdown and Domestic Abuse:* Family disputes, breakdowns, and domestic abuse are significant contributors to homelessness. Shelter (2018) found that domestic abuse was a leading cause of homelessness among women.
4. *Exiting from Institutions:* Individuals leaving prison, care, or the military without adequate support and housing plans are at a high risk of homelessness. The lack of a stable support network makes the transition to regular life challenging.

C. Societal Attitudes and Stigma

1. *Public Perception and Stigma:* Homeless individuals often face public stigma and discrimination. This societal attitude can lead to a lack of empathy and support, further isolating those experiencing homelessness. A study by Crisis (2019) revealed that public attitudes towards homeless people are often negative, influenced by stereotypes and misconceptions, which can impact policy and the allocation of resources.
2. *Media Representation:* The portrayal of homelessness in media often focuses on extreme cases or negative stereotypes, which can skew public perception and understanding of the issue. This representation can influence how policy is shaped and how the public interacts with and supports homeless individuals.

D. The Impact of Homelessness on Individuals

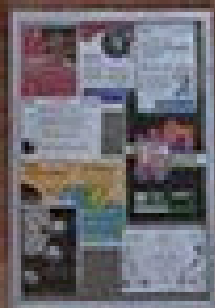
1. *Physical Health:* Homelessness takes a significant toll on physical health. Exposure to harsh weather conditions, poor nutrition, and lack of access to healthcare facilities contribute to deteriorating health. The Queen's Nursing Institute (2019) reported that homeless people are more likely to suffer from chronic conditions such as respiratory problems and infections.
2. *Mental Health:* The psychological impact of homelessness cannot be overstated. The constant stress, anxiety, and trauma of living without a stable home can lead to or exacerbate mental health issues. Research by Homeless Link (2020) found that 80% of homeless people reported mental health issues, with many citing the lack of stable housing as a key factor.
3. *Social Exclusion and Isolation:* Homelessness often leads to social isolation and exclusion. The loss of a stable community and the stigma associated with homelessness can result in a lack of social support, exacerbating feelings of loneliness and despair.
4. *Vulnerability to Exploitation and Abuse:* Homeless individuals are particularly vulnerable to exploitation and abuse. Without a safe and secure place to stay, they are at a higher risk of physical and sexual abuse, as well as exploitation by criminals.

E. The Challenges in Escaping Homelessness

1. *Access to Services:* Accessing services that can help in escaping homelessness, such as housing support, job training, and healthcare, is often challenging. Bureaucratic hurdles and lack of information can be significant barriers.
2. *Cycle of Poverty and Homelessness:* The cycle of poverty and homelessness is difficult to break. Without stable housing, finding employment is challenging, and without employment, securing housing is almost impossible. This cycle can become entrenched over time, making it increasingly difficult to escape.

**HOMELESSNESS IS A
REALITY FOR 1400
PEOPLE A NIGHT ACROSS
LEICESTERSHIRE**

 Falcon



3. Substance Abuse - A Misunderstood Coping Mechanism

Substance abuse is a prevalent issue within the homeless community, often misunderstood and stigmatised. To address this problem effectively, it is essential to delve into the underlying

3. *Lack of Support Networks:* Many homeless individuals lack a support network of family or friends who can assist them in times of need. This lack of support can make the journey out of homelessness much more challenging.

4. *Mental Health and Substance Abuse Barriers:* Addressing mental health issues and substance abuse is crucial for many homeless individuals to break the cycle of homelessness. However, accessing appropriate treatment and support services can be difficult, particularly for those without a stable address or health insurance. The stigma surrounding mental health and addiction further complicates access to these essential services.

F. Policy and Community Responses

1. *Government Initiatives:* Various government initiatives aim to tackle homelessness, but their effectiveness varies. Policies like the Rough Sleeping Strategy and the Homelessness Reduction Act are steps in the right direction, yet they require adequate funding and implementation to be truly effective.
2. *Community and Charitable Organisations:* Charities and community organisations play a crucial role in supporting homeless individuals. They provide essential services, from emergency shelters to long-term support, but they often operate with limited resources and depend heavily on donations and volunteers.
3. *Integrated Approaches:* Addressing homelessness effectively requires an integrated approach that combines housing, healthcare, social services, and employment support. Collaborative efforts between government, non-profits, and the private sector are essential to create sustainable solutions.

G. Moving Forward: Recommendations for Action

1. *Increase Affordable Housing:* A significant increase in the availability of affordable housing is crucial. This includes not only emergency shelters, but also long-term, stable housing options i.e. build replacement houses for the ones sold off to private owners.
2. *Enhance Support Services:* Strengthening support services for mental health and substance abuse, as well as providing comprehensive job training and employment support, is essential.
3. *Improve Access to Services:* Simplifying access to services and reducing bureaucratic barriers can help homeless individuals receive the support they need more quickly and efficiently.
4. *Foster Public Awareness and Understanding:* Educating the public about the realities of homelessness and challenging existing stereotypes can foster a more compassionate and supportive community response.
5. *Encourage Government Action:* Continued advocacy for effective government policies and adequate funding for homelessness programs is vital. This includes not only addressing the immediate needs of homeless individuals but also tackling the root causes of homelessness.

3. Substance Abuse - A Misunderstood Coping Mechanism

Substance abuse is a prevalent issue within the homeless community, often misunderstood and stigmatised. To address this problem effectively, it is essential to delve into the underlying

causes, the types of substances abused, the impact on the individual's health and well-being, and the challenges in accessing treatment and support. This expanded section aims to provide a comprehensive understanding of substance abuse among the homeless, grounded in empathy and supported by factual evidence.

Underlying Causes of Substance Abuse in Homelessness

The relationship between homelessness and substance abuse is complex and bidirectional. Substance abuse can be both a cause and a consequence of homelessness. For many, substance use begins as a coping mechanism to deal with the harsh realities of living on the streets, including exposure to violence, extreme weather conditions, and chronic stress. A study by the Substance Abuse and Mental Health Services Administration (SAMHSA) found that over a quarter of homeless individuals suffer from mental health disorders, often turning to substances as a form of self-medication (SAMHSA, 2020).

Types of Substances Abused and Their Impact

The types of substances abused by the homeless vary, including alcohol, prescription medications, heroin, methamphetamine, and increasingly, synthetic drugs like Spice and K2. Alcohol remains one of the most commonly abused substances due to its availability and relatively low cost. The impact of these substances on an individual's health can be devastating, leading to physical ailments such as liver disease, heart problems, and increased risk of infectious diseases, as well as exacerbating mental health issues.

Barriers to Treatment and Support

Accessing treatment for substance abuse is particularly challenging for homeless individuals. Barriers include lack of healthcare coverage, limited availability of specialized treatment programs, and the stigma associated with both homelessness and substance abuse. Furthermore, traditional substance abuse programs often do not address the unique needs of the homeless population, such as the need for housing and comprehensive social support services.

The Role of Mental Health in Substance Abuse

Mental health issues are intrinsically linked with substance abuse among the homeless. The prevalence of mental health disorders, including depression, anxiety, bipolar disorder, and schizophrenia, is significantly higher in the homeless population compared to the general population. The dual diagnosis of mental health and substance abuse disorders complicates treatment, as both issues need to be addressed simultaneously for effective recovery.

Impact of Substance Abuse on Homelessness

Substance abuse can exacerbate the challenges of homelessness. It can lead to increased social isolation, difficulty in maintaining relationships, and a decreased ability to engage with support services. Substance abuse can also lead to involvement

with the criminal justice system, creating additional barriers to housing and employment. The cycle of addiction and homelessness becomes increasingly difficult to break as these factors intertwine.

Effective Approaches to Addressing Substance Abuse in Homelessness

To effectively address substance abuse among the homeless, a multifaceted approach is required. This includes:

1. *Integrated Treatment Programs*: Programs that address both substance abuse and mental health issues concurrently are crucial. Integrated treatment models, such as those incorporating Cognitive Behavioural Therapy (CBT) and Dialectical Behaviour Therapy (DBT), have shown effectiveness in treating dual diagnoses.

2. *Housing First Models*: The Housing First approach, which provides immediate access to housing without preconditions of sobriety or treatment participation, has been successful in improving the stability of homeless individuals with substance abuse issues. Stable housing can provide a foundation from which individuals can more effectively engage in treatment.

3. *Harm Reduction Strategies*: Harm reduction strategies, such as needle exchange programs and supervised consumption sites, can reduce the health risks associated with substance abuse. These strategies also provide opportunities for engagement with healthcare and social services.

4. *Peer Support and Community Involvement*: Involving individuals who have experienced similar challenges in the design and delivery of services can enhance their effectiveness. Peer support can offer empathy, understanding, and practical advice that is particularly resonant.

5. *Access to Healthcare and Social Services*: Improving access to healthcare and social services is critical. This includes expanding healthcare coverage, increasing the availability of substance abuse treatment programs tailored to the homeless population, and providing support for associated issues such as legal problems and job training.

6. *Trauma-Informed Care*: Many homeless individuals have experienced trauma, which can be a significant factor in substance abuse. Trauma-informed care recognizes the prevalence of trauma and integrates this understanding into all aspects of service delivery. This approach helps in creating a safe and supportive environment that facilitates recovery.

7. *Outreach Programs*: Proactive outreach is essential to engage homeless individuals who may be reluctant or unable to seek help. Outreach programs can connect individuals with essential services, provide health checks, and offer support in accessing treatment for substance abuse.

8. *Education and Prevention Programs*: Education about substance abuse and its risks, particularly targeted at at-risk populations, can play a key role in prevention. Additionally, programs that address the root causes of homelessness, such as poverty, unemployment, and lack of affordable housing, are also crucial.

9. *Collaboration Between Agencies*: Collaboration between different agencies, including healthcare providers, social services, housing authorities, and law enforcement, can ensure a coordinated and comprehensive response to the needs of homeless individuals struggling with substance abuse.

10. *Continuous Support and Follow-Up*: Long-term support and follow-up are vital to prevent relapse. This includes ongoing counselling, support groups, and assistance in maintaining housing and employment.

Substance abuse among the homeless is a complex issue that requires a compassionate, multifaceted approach. By understanding the underlying causes, addressing the barriers to

treatment, and implementing comprehensive, integrated strategies, it is possible to make significant progress in helping homeless individuals overcome substance abuse and rebuild their lives. As a society, it is our collective responsibility to provide the support and resources necessary to address this challenge effectively.

4. Employment Barriers - More Than Just a Lack of Address

Gaining employment is often seen as a critical step towards independence and stability for homeless individuals. However, the journey from homelessness to employment is fraught with numerous, often overlooked, barriers. These barriers extend beyond the obvious challenges such as the lack of a permanent address or a bank account. To effectively support homeless individuals in their pursuit of employment, it is essential to understand these multifaceted obstacles in detail.

The Stigma of Homelessness and Employer Bias

One of the most significant barriers faced by homeless individuals is the stigma associated with homelessness. This stigma often translates into employer bias, making it challenging for homeless individuals to find employment. A study by the Institute of Global Homelessness (IGH) highlights that employers often harbour misconceptions about homeless people, associating them with unreliability, poor health, or substance abuse issues (Institute of Global Homelessness, 2021). This bias can lead to a lack of opportunity for even the most qualified and capable homeless job seekers.

Lack of Access to Essential Documentation

Homeless individuals frequently struggle to secure or maintain essential documentation necessary for employment. This includes identification documents, social security cards, and work permits. A report by Shelter, emphasises that the loss or theft of these documents is common among the homeless, and replacing them can be a complex, often costly process (Shelter, 2020). Without these documents, the path to employment becomes significantly more challenging.

Gaps in Employment History and Skills

Many homeless individuals have gaps in their employment history, which can be a red flag for potential employers. These gaps may arise due to various reasons, including mental health issues, physical illness, or the very fact of being homeless. Additionally, as noted by the Office for National Statistics (ONS), homeless individuals often lack access to opportunities for skill development or education, further diminishing their employability (Office for National Statistics, 2019).

Physical and Mental Health Challenges

The physical and mental health challenges faced by homeless individuals cannot be overstated. The harsh realities of living without a home can lead to or exacerbate health issues. According to a report by the Health Foundation, homeless individuals are more likely to suffer from chronic physical conditions and mental health issues, which can be barriers to maintaining steady employment (Health Foundation, 2021). Employers may be hesitant to hire someone they perceive as having complex health needs.

Limited Access to Resources for Job Searching

The process of finding a job typically requires resources that homeless individuals often lack. This includes access to the internet, a phone, a mailing address, and transportation. A survey by Crisis reveals that many homeless individuals do not have regular access to the internet, making it difficult to search for job listings, submit applications, or participate in online interviews (Crisis, 2021).

The Challenge of Presentability

For homeless individuals, maintaining an appropriate level of personal hygiene and presentability for job interviews and employment can be a significant hurdle. Without regular access to facilities such as showers, laundry, and safe storage for clothing, maintaining a professional appearance becomes a daunting task. This challenge is not just about physical appearance; it also impacts an individual's self-esteem and confidence, which are crucial in job interviews and workplace interactions.

Transportation Barriers

Transportation is another critical barrier. Many job opportunities may be located far from shelters or areas where homeless individuals can safely reside. The cost of public transportation can be prohibitive, and without a stable income, affording even the most basic travel expenses is often out of reach. This limitation severely restricts the range of job opportunities accessible to a homeless person.

Addressing Mental Health and Substance Abuse Issues

While substance abuse is not universal among homeless individuals, it is a significant issue for some. Substance abuse can be both a cause and a consequence of homelessness. The stress and trauma of being homeless can exacerbate substance abuse issues, creating a vicious cycle that hinders the ability to secure and maintain employment. Mental health issues, often intertwined with substance abuse, can also be a barrier. Without proper support and treatment, these issues can make it challenging for individuals to engage in consistent, structured employment.

The Impact of Criminal Records

A criminal record can be a substantial barrier to employment. Homeless individuals are more likely to have interactions with the criminal justice system, often for survival-related or minor offenses. However, even a minor criminal record can lead to automatic disqualification for many jobs. This situation creates a significant hurdle in finding employment, further entrenching the cycle of homelessness.

Lack of Support Networks

A robust support network is crucial for job search success. Homeless individuals often lack this network, missing out on the mentorship, advice, and connections that can be crucial in finding employment. The absence of a support system also means that they lack encouragement and guidance, which can be demoralising and reduce motivation in the job search process.

Childcare Challenges for Homeless Parents

For homeless parents, childcare is a significant concern. Without stable housing, accessing affordable and reliable childcare becomes a formidable challenge, making it difficult to attend job interviews or maintain regular employment. This barrier is particularly acute for single parents, who cannot share childcare responsibilities.



THIS YEAR

**WE'VE SUPPORTED
OVER 1700 PEOPLE**

AND

**ACCOMMODATED
OVER 200 PEOPLE**

Solutions and Support Systems

Addressing these barriers requires a multifaceted approach. Charities, government agencies, and private organisations can play a crucial role in providing support. This support can include:

1. *Job Training and Education Programs:* Tailored programs that help homeless individuals develop new skills or update existing ones can enhance employability.
2. *Health and Substance Abuse Treatment:* Access to health services, including mental health and substance abuse treatment, is vital in preparing individuals for the workforce.
3. *Assistance with Documentation:* Helping individuals obtain and secure essential personal documents can remove a significant barrier to employment.
4. *Transportation and Childcare Support:* *Providing* or subsidising transportation and childcare can make it feasible for homeless individuals to seek and maintain employment.
5. *Mentorship and Networking Opportunities:* Building networks and mentorship programs can provide the necessary guidance and connections for job seekers.
6. *Addressing Employer Bias:* Educating employers about the realities of homelessness and the potential of homeless individuals as reliable and valuable employees is crucial. This can involve workshops, awareness campaigns, and incentives for hiring homeless individuals.
7. *Flexible Employment Opportunities:* Encouraging the development of flexible job opportunities that can accommodate the unique challenges faced by homeless individuals, such as variable schedules and remote work options, can be beneficial.
8. *Legal Assistance:* Providing legal support to help homeless individuals address issues related to criminal records can open up more employment opportunities.
9. *Personal Development and Confidence Building:* Programs focused on personal development, including interview coaching and confidence-building workshops, can empower homeless individuals in their job search.
10. *Creating a Continuum of Support:* Establishing a continuum of support that follows individuals from homelessness into employment and beyond is essential. This support should be adaptable to individual needs and circumstances, ensuring a sustainable transition into the workforce.

The journey from homelessness to employment is complex and fraught with numerous barriers. These challenges are multifaceted, ranging from practical issues like lack of documentation and transportation to more profound obstacles such as mental health issues, substance abuse, and societal stigma. Addressing these barriers requires a comprehensive, empathetic approach that encompasses skill development, health support, legal assistance, and efforts to change employer perceptions.

By understanding and addressing these barriers, organisations and societies can better support homeless individuals in their journey towards employment and independence. This not only benefits the individuals directly affected but also contributes to the overall health and well-

being of the community. As we work towards these goals, it is crucial to remember that every individual's journey is unique, and a one-size-fits-all approach is unlikely to be effective. Personalised support, patience, and a deep understanding of the multifaceted nature of homelessness are key to making a lasting impact.

5. The Vicious Cycle of Homelessness

Understanding the Cycle

Homelessness is not a static state but a dynamic and often cyclical process. The cycle of homelessness is perpetuated by a combination of personal, social, and systemic factors that interact in complex ways. To break this cycle, it is essential to understand its components and the interplay between them.

1. Initial Factors Leading to Homelessness

The journey into homelessness often begins with one or several precipitating events. These can include loss of employment, eviction, domestic abuse, mental health issues, or the breakdown of key relationships. For instance, a study by Shelter, a UK-based charity, found that 45% of homeless people reported relationship breakdown as a contributing factor to their homelessness (Shelter, 2017).

2. The Immediate Impact of Losing a Home

The immediate aftermath of becoming homeless is often a state of shock and disorientation. The loss of a stable environment leads to increased vulnerability and exposure to risks such as violence, theft, and exploitation. The psychological impact is profound, with feelings of shame, isolation, and hopelessness being common.

3. Health Deterioration

Living on the streets or in inadequate temporary accommodations can lead to a rapid decline in physical and mental health. Homeless individuals are more likely to suffer from chronic conditions such as respiratory problems, skin diseases, and infections. Mental health issues are also prevalent, with the homeless population being nine times more likely to commit suicide than the general population, as reported by Crisis (Crisis, 2019).

4. Substance Abuse as a Coping Mechanism

As previously mentioned, many homeless individuals turn to drugs or alcohol as a means of coping with the harsh realities of their situation. This substance use, while providing temporary relief, often exacerbates their health problems and further alienates them from potential support networks.

5. Barriers to Social Services and Healthcare

Accessing social services and healthcare can be incredibly challenging for homeless individuals. Lack of identification, documentation, and a permanent address can create bureaucratic obstacles. Additionally, the stigma attached to homelessness can lead to discrimination and inadequate care when they do access services.

6. Employment and Financial Challenges

Gaining employment is a critical step towards escaping homelessness. However, without a fixed address, regular access to hygiene facilities, and appropriate clothing, attending interviews and

maintaining a job becomes nearly impossible. The lack of financial resources also means that saving enough money for a deposit on accommodation is out of reach for many.

7. Social Isolation and Stigma

Homelessness often leads to social isolation. The stigma associated with being homeless can erode self-esteem and discourage individuals from seeking help. This isolation can make it difficult to maintain relationships or form new ones, further entrenching the sense of disconnection from society.

8. The Difficulty in Securing Housing

Securing long-term housing is the most significant challenge. The high cost of rent, especially in urban areas, combined with a lack of affordable housing and the reluctance of landlords to rent to homeless individuals, makes this a daunting task. Additionally, the complex and often unfriendly bureaucratic processes involved in accessing housing assistance can be overwhelming.

9. The Role of Government and Policy

Government policies and social support systems play a crucial role in either exacerbating or alleviating homelessness. Cuts to social welfare programs, lack of investment in affordable housing, and inadequate mental health services contribute to the cycle of homelessness. Conversely, proactive policies and sufficient funding for support services can provide the necessary assistance to break this cycle.

10. The Impact of Childhood Experiences

Research has shown that adverse childhood experiences (ACEs) are significantly higher among the homeless population. These experiences, which can include abuse, neglect, and family dysfunction, increase the risk of various negative outcomes in adulthood, including homelessness. A study by the Joseph Rowntree Foundation highlighted the strong correlation between ACEs and adult homelessness (Joseph Rowntree Foundation, 2020).

11. The Challenge of Reintegration

Even when homeless individuals manage to secure housing, the challenge of reintegrating into society remains. The experience of homelessness can leave lasting psychological scars. Adjusting to a stable environment after a prolonged period of instability can be a daunting process, requiring ongoing support.

12. The Risk of Recidivism

The risk of returning to homelessness remains high, particularly in the absence of sustained support. Factors such as inadequate follow-up services, ongoing mental health or substance abuse issues, and the lack of a stable support network contribute to the risk of recidivism.

Breaking the Cycle - The Role of Supportive Services

To effectively break the cycle of homelessness, a multi-faceted approach is required. This includes:

- *Provision of Immediate Needs:* Ensuring access to shelter, food, and basic healthcare is the first step in stabilising individuals who are homeless.

- *Long-Term Housing Solutions*: Investment in affordable housing and supportive housing programs is crucial. These programs should be coupled with flexible policies that accommodate the unique needs of homeless individuals.

- *Integrated Health Services*: Providing integrated services that address both physical and mental health needs, including substance abuse treatment, is essential.

- *Employment and Training Programs*: Offering vocational training and employment assistance can help homeless individuals gain the skills and opportunities needed to secure stable employment.

- *Social Support and Reintegration Programs*: Services that help rebuild social connections and support the reintegration process are vital. This includes counselling, community programs, and peer support groups.

- *Policy Advocacy*: Advocating for policies that address the root causes of homelessness, such as poverty, lack of affordable housing, and inadequate mental health services, is critical.

The cycle of homelessness is a complex and multifaceted issue that requires a compassionate, informed, and comprehensive response. Understanding the various stages and challenges of this cycle is crucial for developing effective strategies to support those affected. By providing holistic and sustained support, we can make significant strides in breaking this cycle and helping individuals rebuild their lives.

References:

- Shelter. (2017). *Homelessness: A silent killer*. [online] Available at: [https://england.shelter.org.uk/]

- Crisis. (2019). *Homelessness and health*. [online] Available at: [https://www.crisis.org.uk/]

- Joseph Rowntree Foundation. (2020). *Adverse childhood experiences and adult homelessness*. [online] Available at: [https://www.jrf.org.uk/]

- Substance Abuse and Mental Health Services Administration (SAMHSA). (2020). *Homelessness and Substance Use Disorders*. [online] Available at: [https://www.samhsa.gov/homelessness-programs-resources]

- National Alliance to End Homelessness. (2019). *Housing First*. [online] Available at: [https://endhomelessness.org/resource/housing-first/]

- National Institute on Drug Abuse. (2018). *Comorbidity: Substance Use Disorders and Other Mental Illnesses*. [online] Available at: [https://www.drugabuse.gov/publications/drugfacts/comorbidity-substance-use-disorders-other-mental-illnesses]

- Office of National Statistics. (2019). *Rough sleeping in England: autumn 2019*. [online] Available at: [https://www.ons.gov.uk/]

- Shelter. (2019). *This is England: a picture of homelessness in 2019*. [online] Available at: [https://england.shelter.org.uk/]

- Mental Health Foundation. (2020). *Homelessness and mental health*. [online] Available at: [https://www.mentalhealth.org.uk/]

Crisis. (2020). *The causes of homelessness*. [online] Available at: [https://www.crisis.org.uk/]

Crisis. (2018). *The cost of homelessness*. [online] Available at: [https://www.crisis.org.uk/]

Save the  Falcon Centre

IT'S UP TO US.

